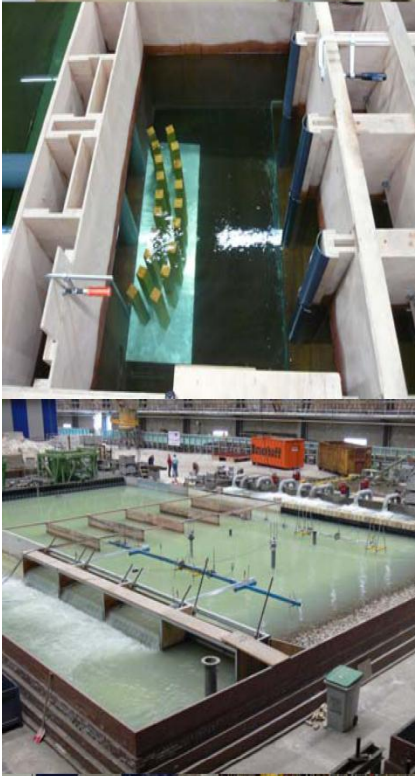
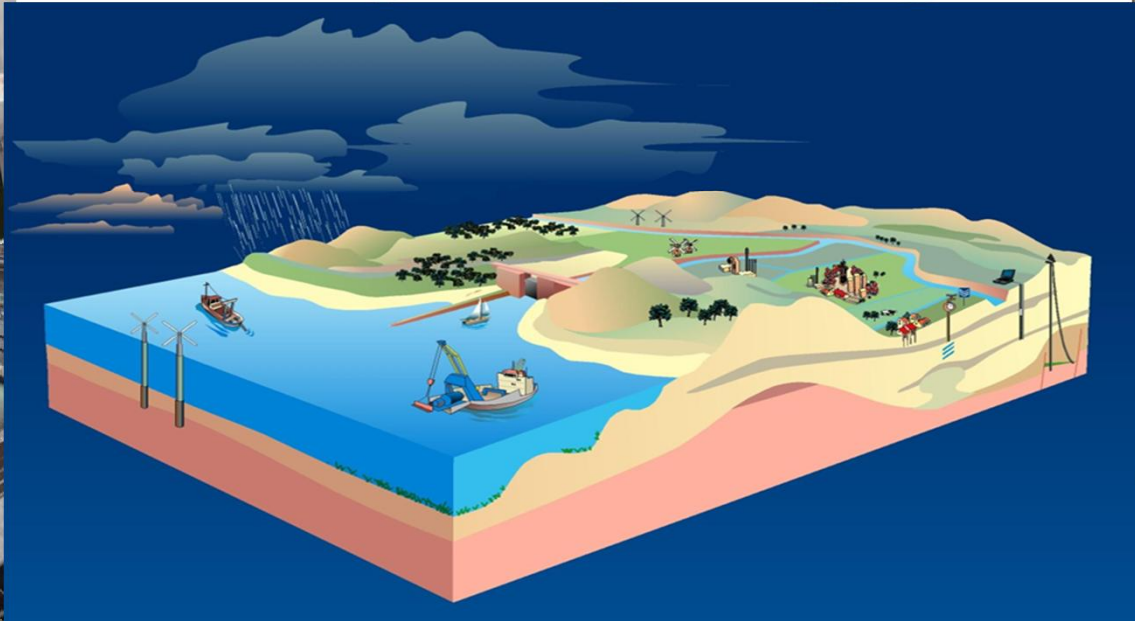




Deltares



Enabling Delta Life – Societal Themes

Strategic knowledge partner of the Dutch government



Flood risk

Operational flood management

Ecosystems and environmental quality

Nature-based solutions

Water and subsoil resources

Water and Peace

Delta infrastructure

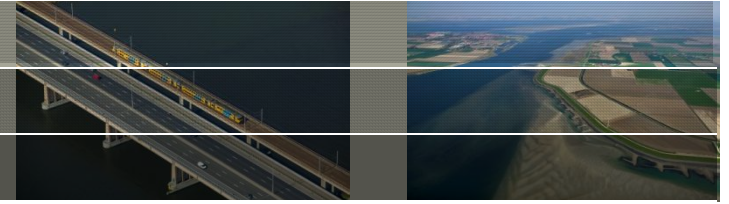
Energy transition

Sustainable delta planning

Climate adaptation / Urban resilience

The World of Deltares





Five Roles:

- **Knowledge Centre**

We manage and collect knowledge. We maintain the knowledge base and make the knowledge accessible

- **Development Centre**

Creating new concepts in innovative and multidisciplinary ways

- **Knowledge Broker**

We develop partnerships and maintain knowledge networks

- **Independent Specialist Advisor**

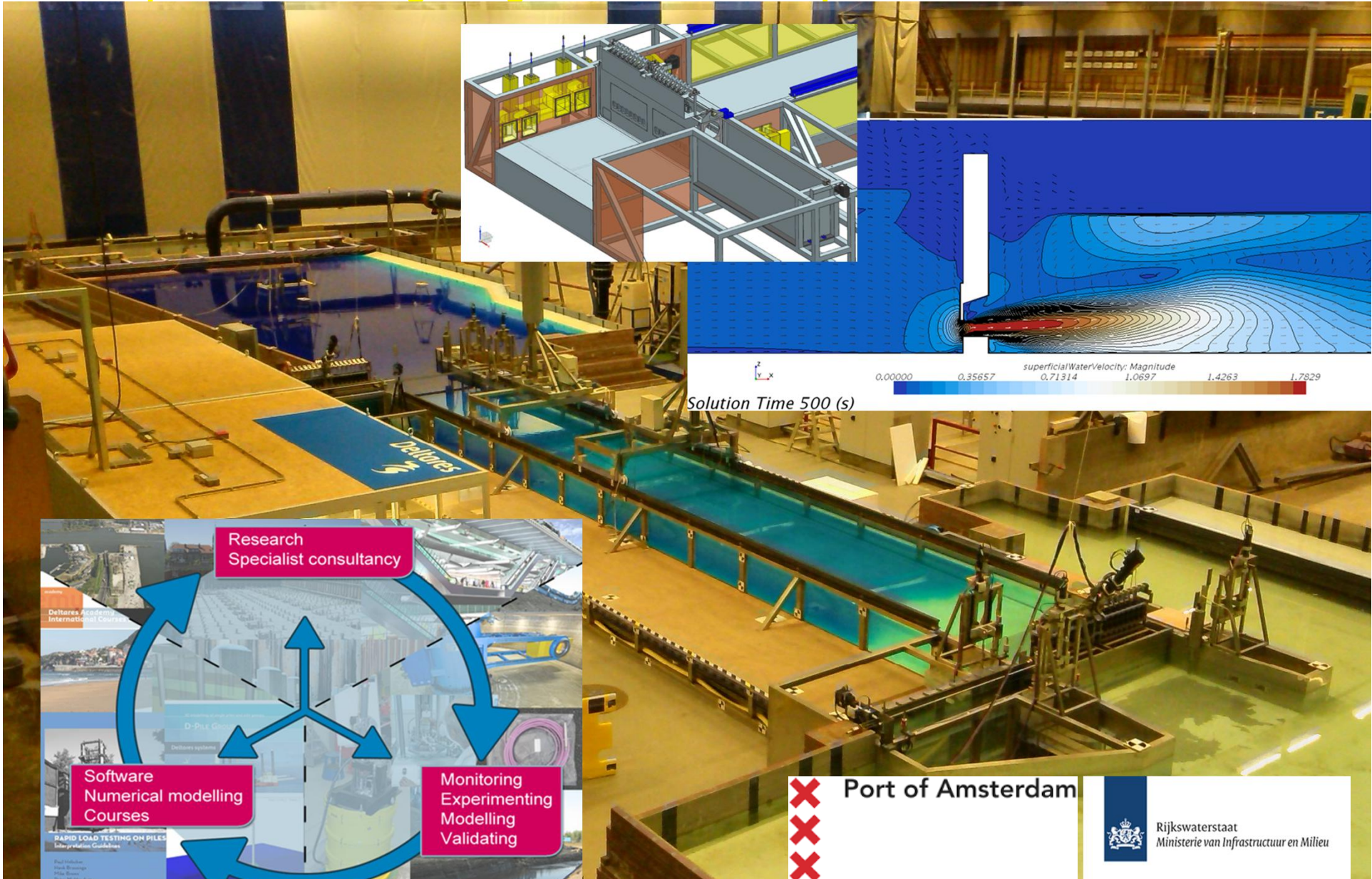
For national and international issues related to water, the subsurface and delta areas

- **We monitor and evaluate the delta**

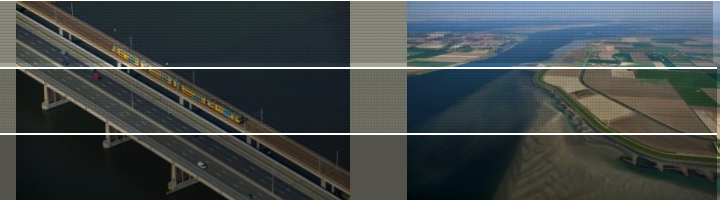
We have a vision on delta issues

Power of Deltares: Hybrid modelling

experts – knowledge - big data – field/lab experiments – software/models



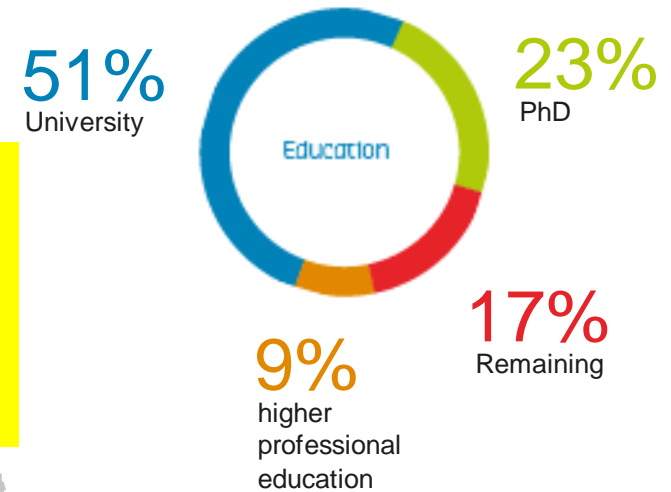
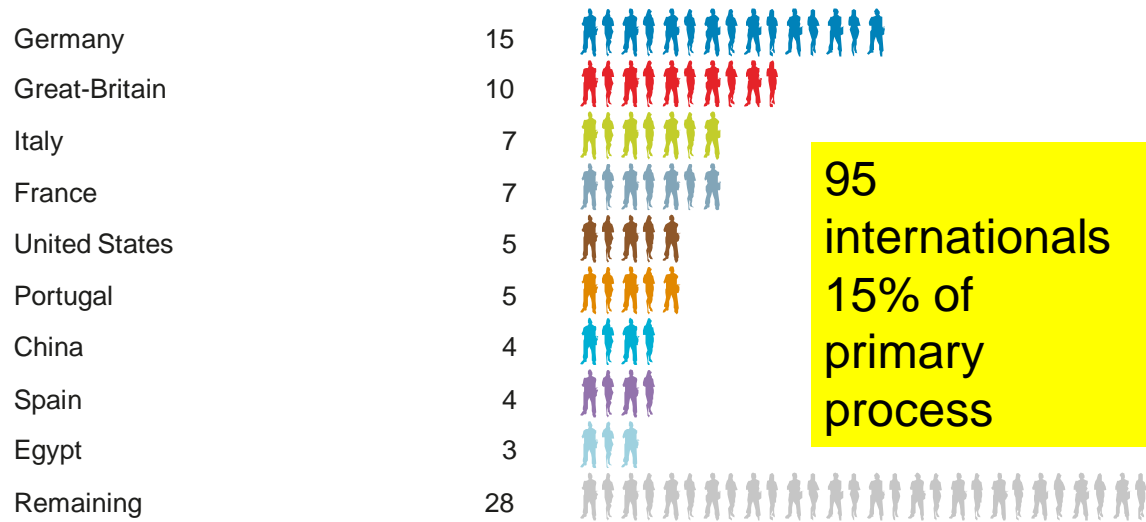
Some 825 Employees



32
nationalities

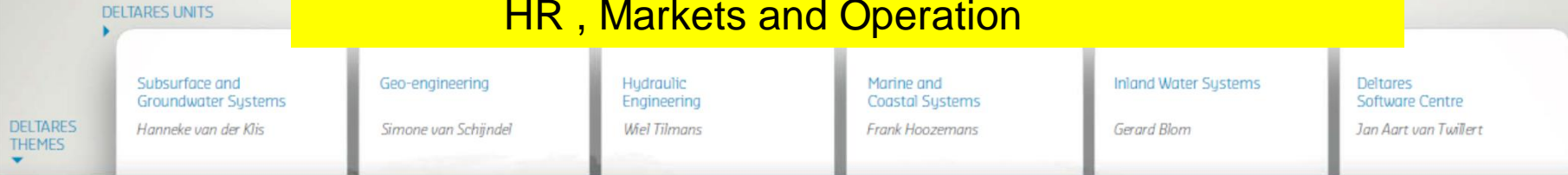
Some 75%
Academics

In total there are 32 nationalities working at Deltares



Not –for-profit independent foundation

HR , Markets and Operation



Jan Aart van Twillert

Flood risk

Tom Schilperoord

Ecosystems and environmental quality

Hans Vissers

Water and subsoil resources

Peter van den Berg

Delta infrastructure

Gerard Blom

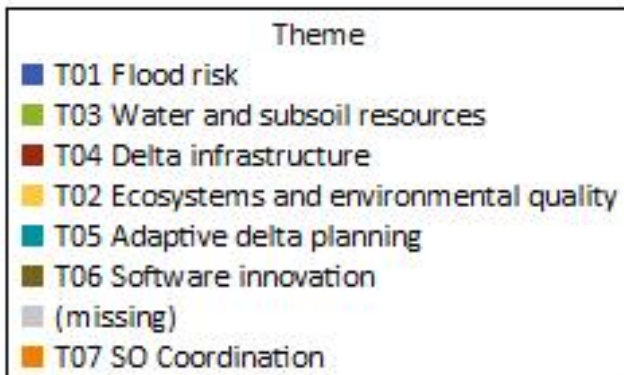
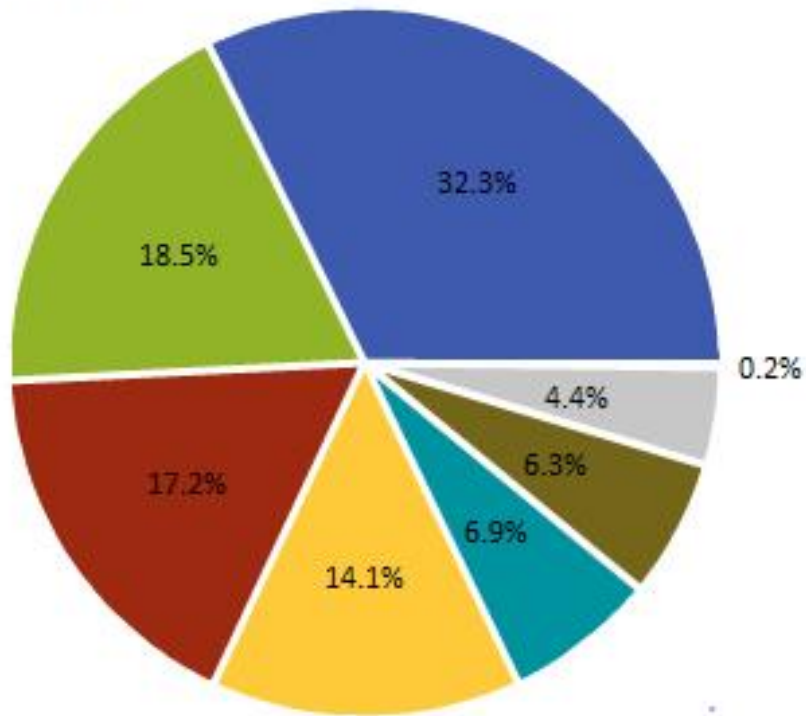
Sustainable delta planning

Science & Enabling Technology



Gross turnover per societal theme (2017)

Balance (x 1.000)

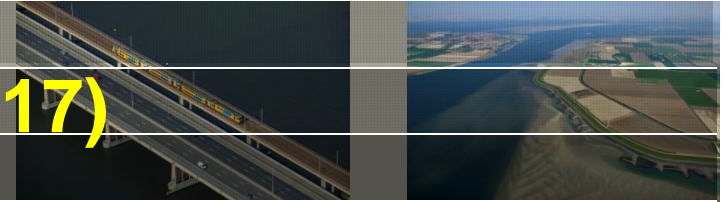


1/3 contract
1/3 research
1/3 public
1/3 private

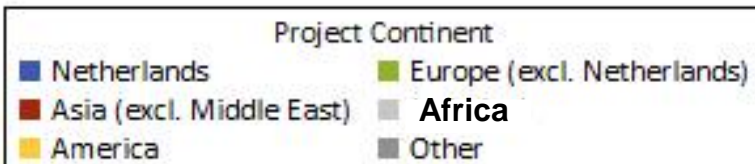
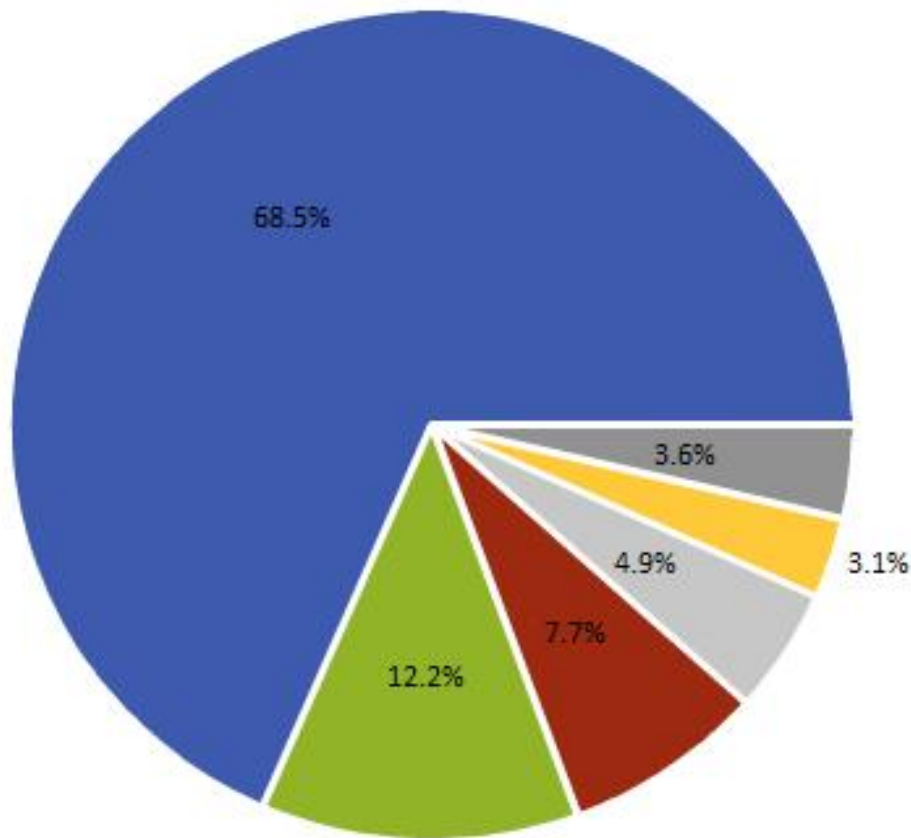
Total 105 Meuro
gross turnover

Deltares

Gross turnover per region (2017)



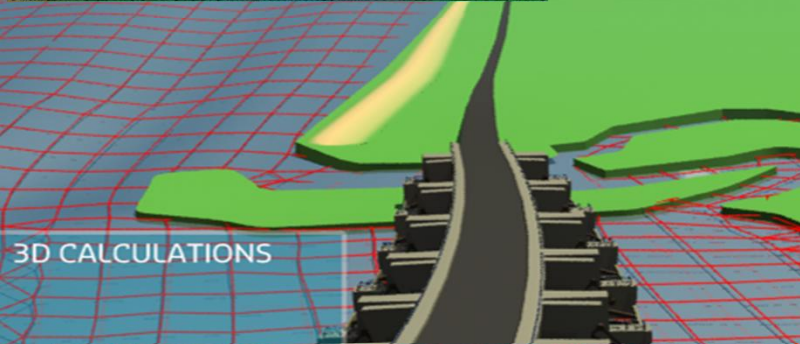
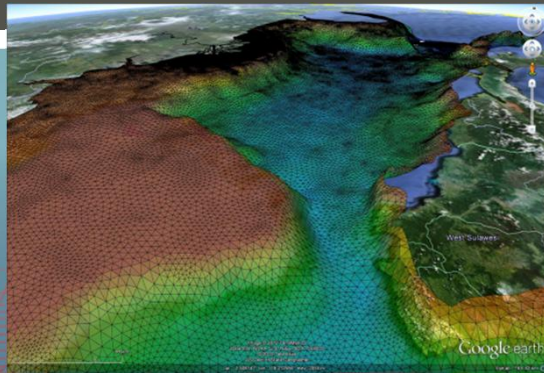
Balance (x 1.000)



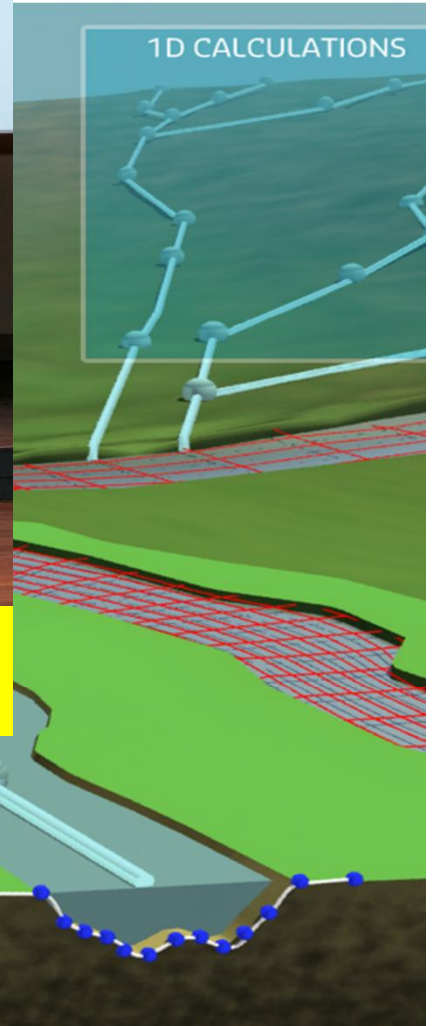
< 70% Netherlands
> 30% Overseas
(40% ambition)

Total 105 Meuro
gross turnover

WE DARE TO SHARE: Sharing software



IAHR Industry Innovation



TU Delft **UNESCO-IHE** **Deltares**
Institute for Water Education Enabling Delta Life

**500 attendees from
some 50 nations**

Delft Software Days
Delft, The Netherlands

- Deltares software used in more than 100 countries
- Open software establishes sharing community
- Over 1500 registrations on open source portal

Deltares

WE DARE TO SHARE: Sharing facilities

In-situ measurements



laboratories



Full-scale test facilities



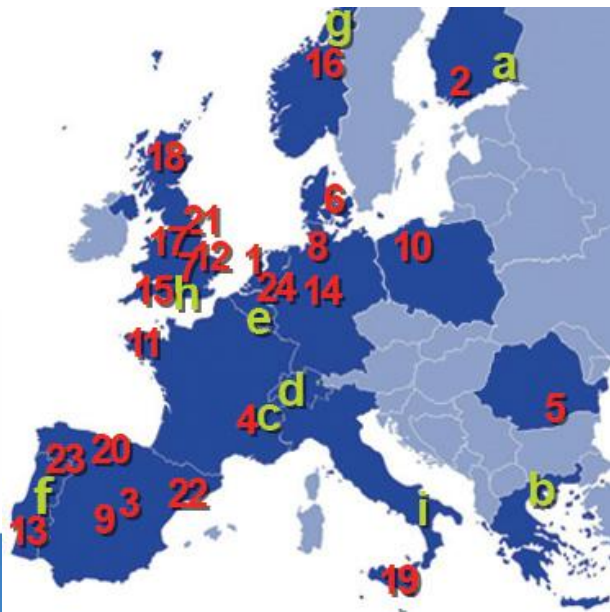
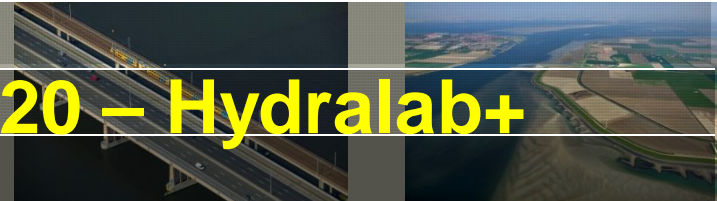
Large-scale experimental facilities

Small-scale experimental facilities



Deltares

European leader in Horizon2020 – Hydralab+ (consortium 22 partners, 8 associates)



The co-ordinated and integrated approach of HYDRALAB aims at structuring the access to unique and costly hydraulic and ice engineering research infrastructures in the European Research Area. The Joint Research Activities also focus on improving the capabilities of the experimental facilities, the research methods and instrumentation

More than Water ...

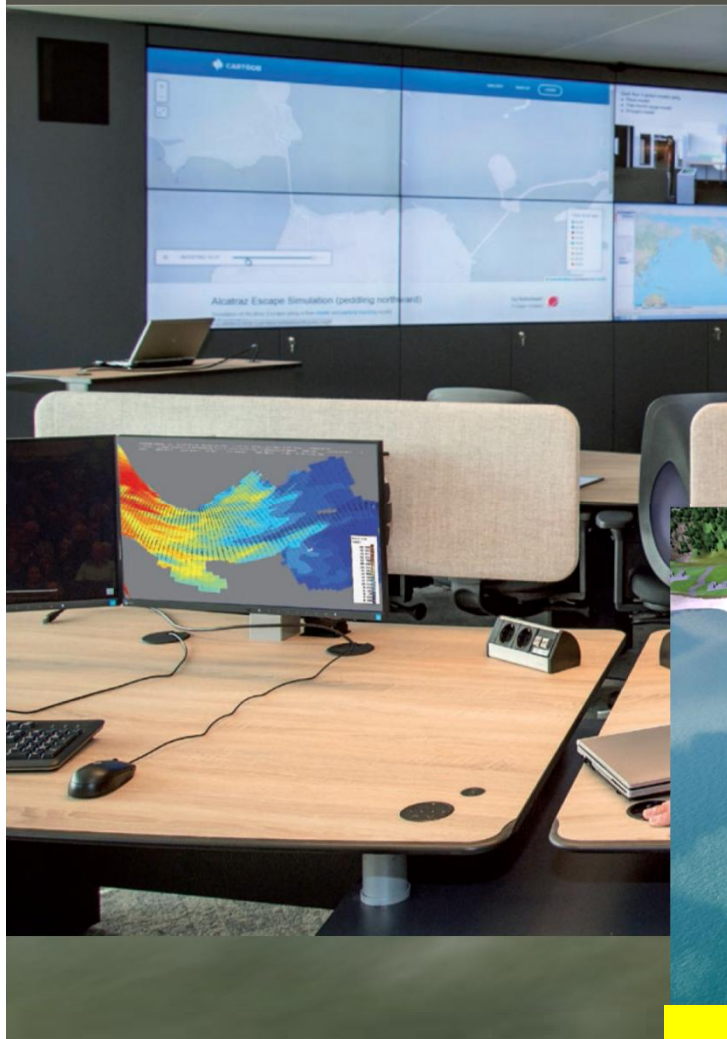


Partners
CNRS Grenoble
IFREMER Brest
Associate
ARTELIA Grenoble

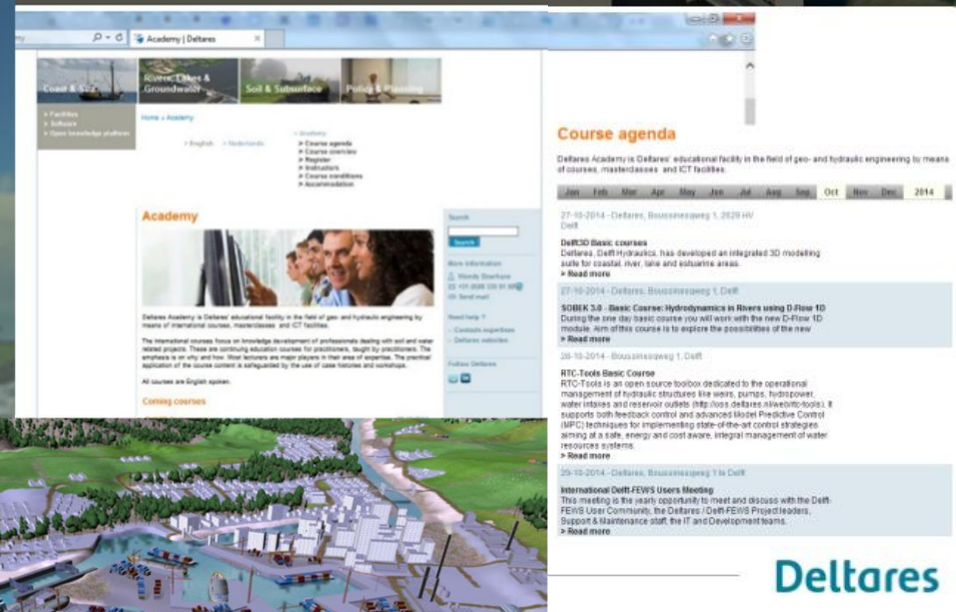


Deltares

WE DARE TO SHARE: Sharing knowledge



Deltares Academy (www.deltares.nl/en/academy)



Serious game: Port of the future

Through serious gaming, (open source) software, publications, data and models, doctorate supervision, Deltares Academy, workshops, congresses and projects/research projects, Deltares Software Days

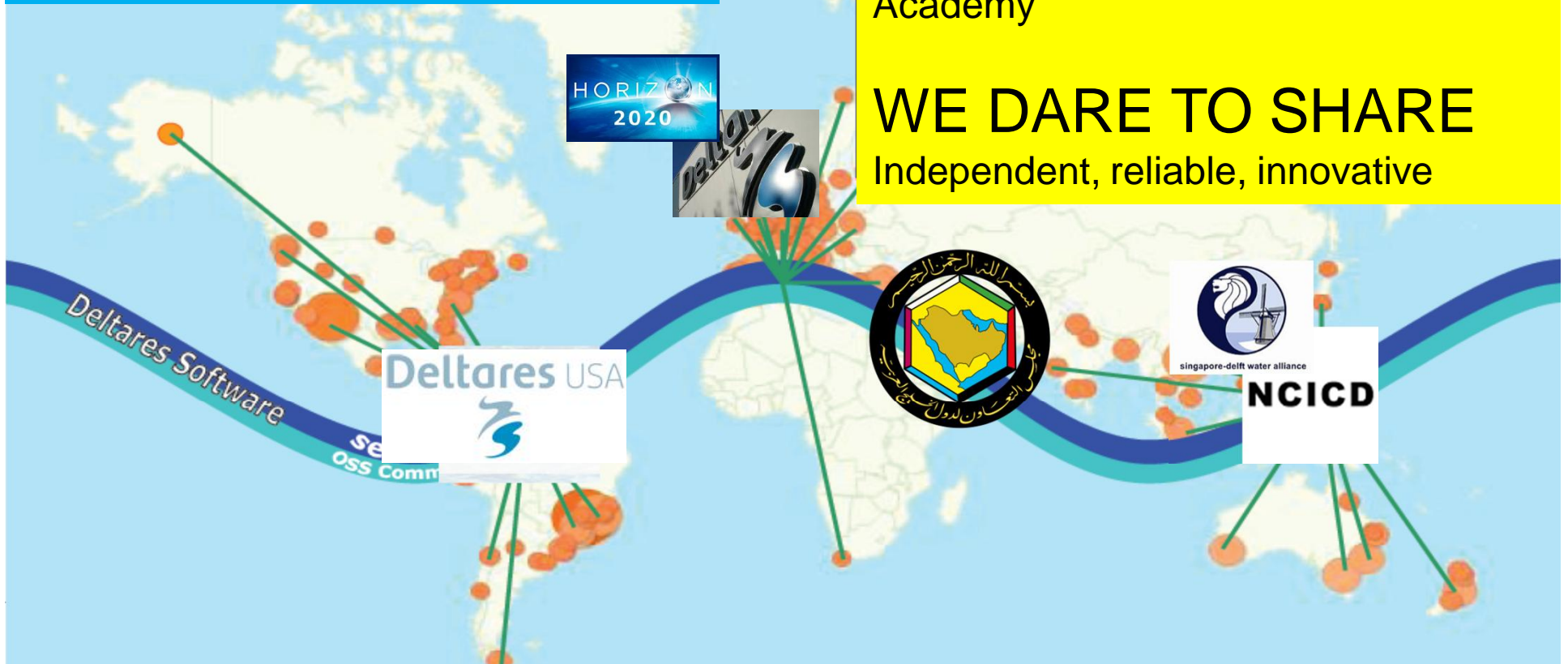
Deltares

From national alliance to world alliance

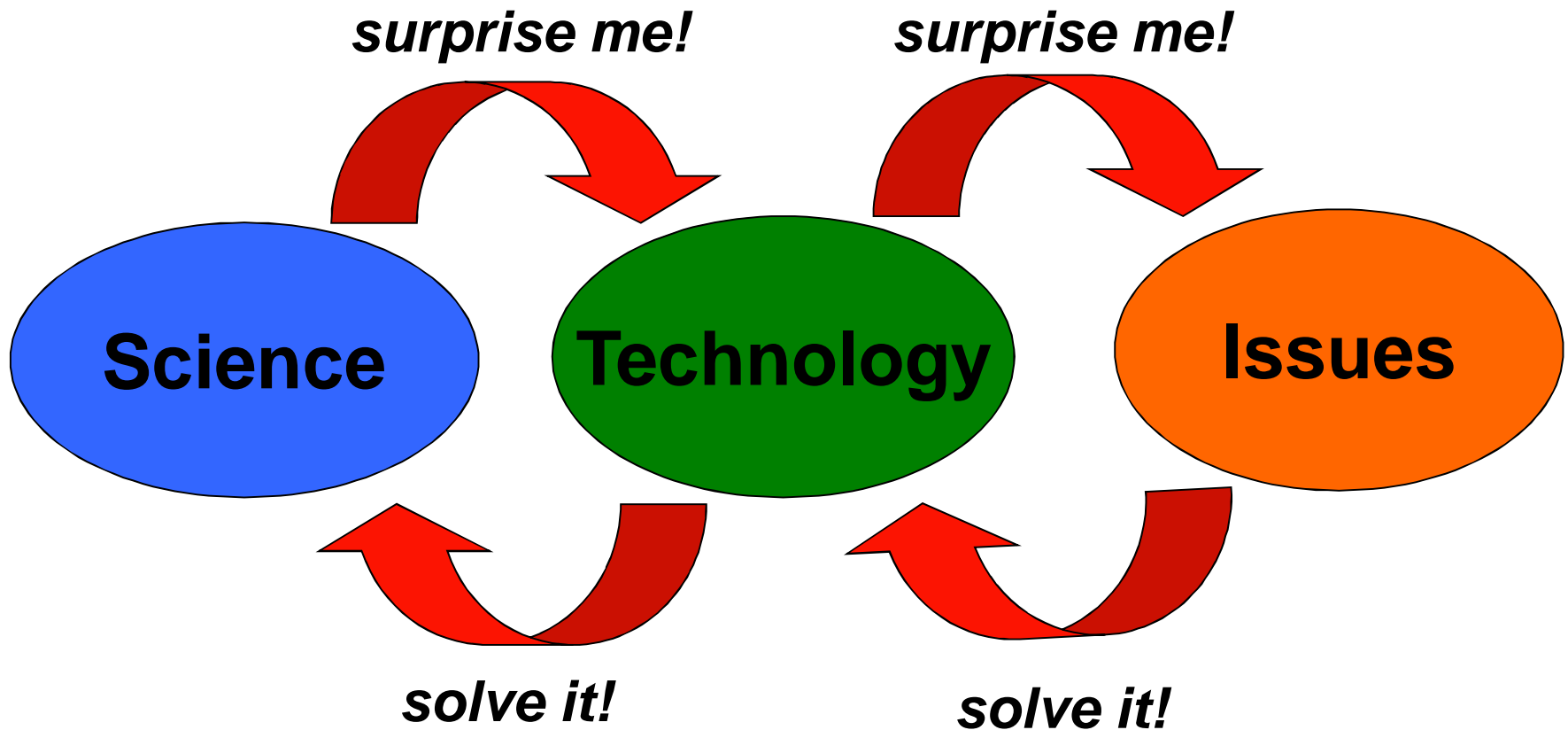
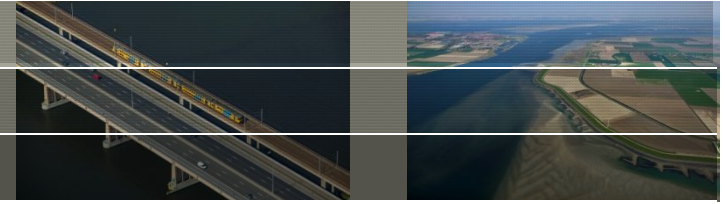
Strategic knowledge alliances to accelerate knowledge growth and innovation:
Singapore-Delft Water Alliance
NCICD Integrated Coastal Developm.
NOAA-USGS-USACE-ONR-TWIG
KISR-Adwea-Masdar-KAUST-QatarF.

Scientific network
Strategic alliances
Open source software
Community development
Academy

WE DARE TO SHARE
Independent, reliable, innovative

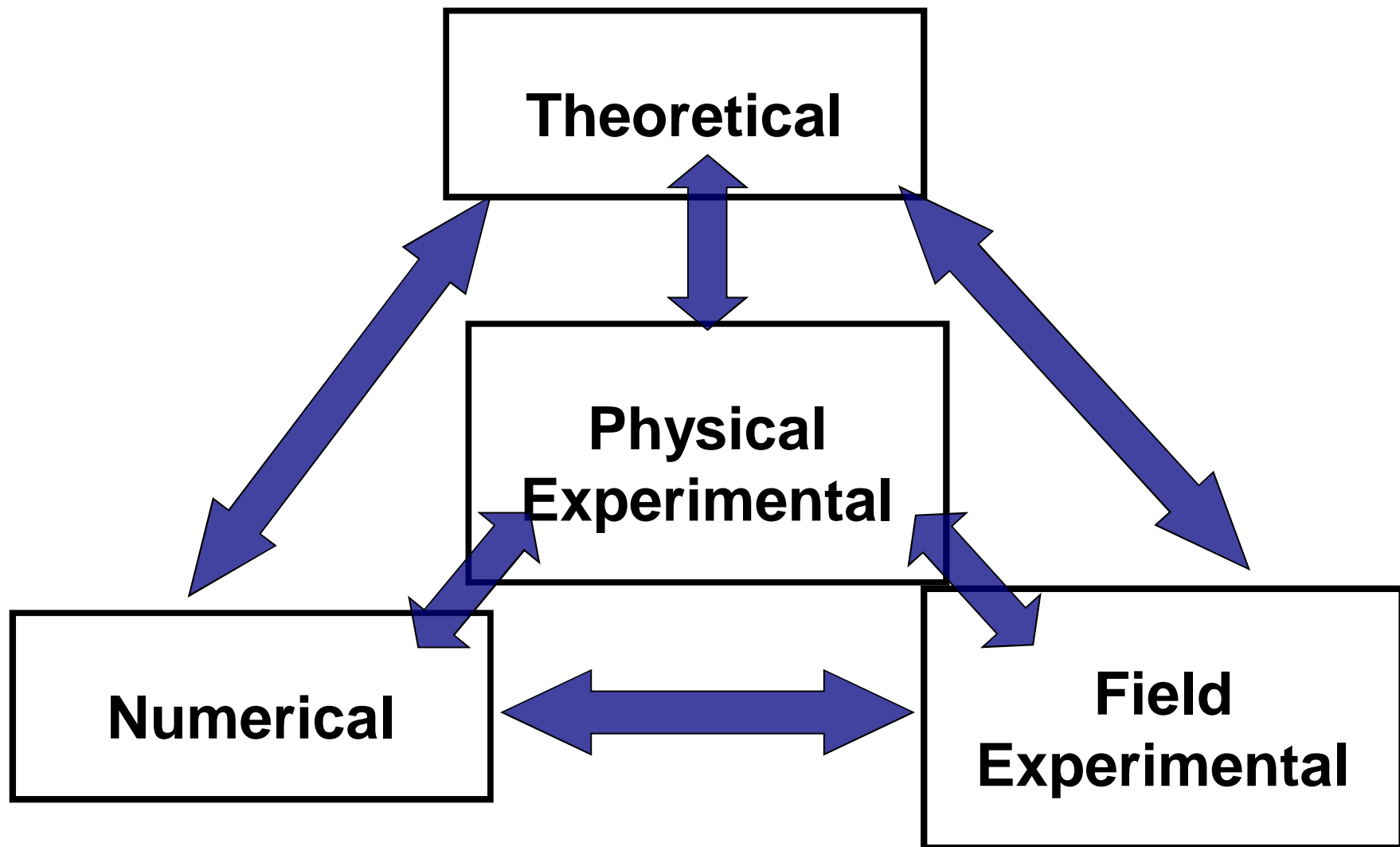


Innovation cycles:

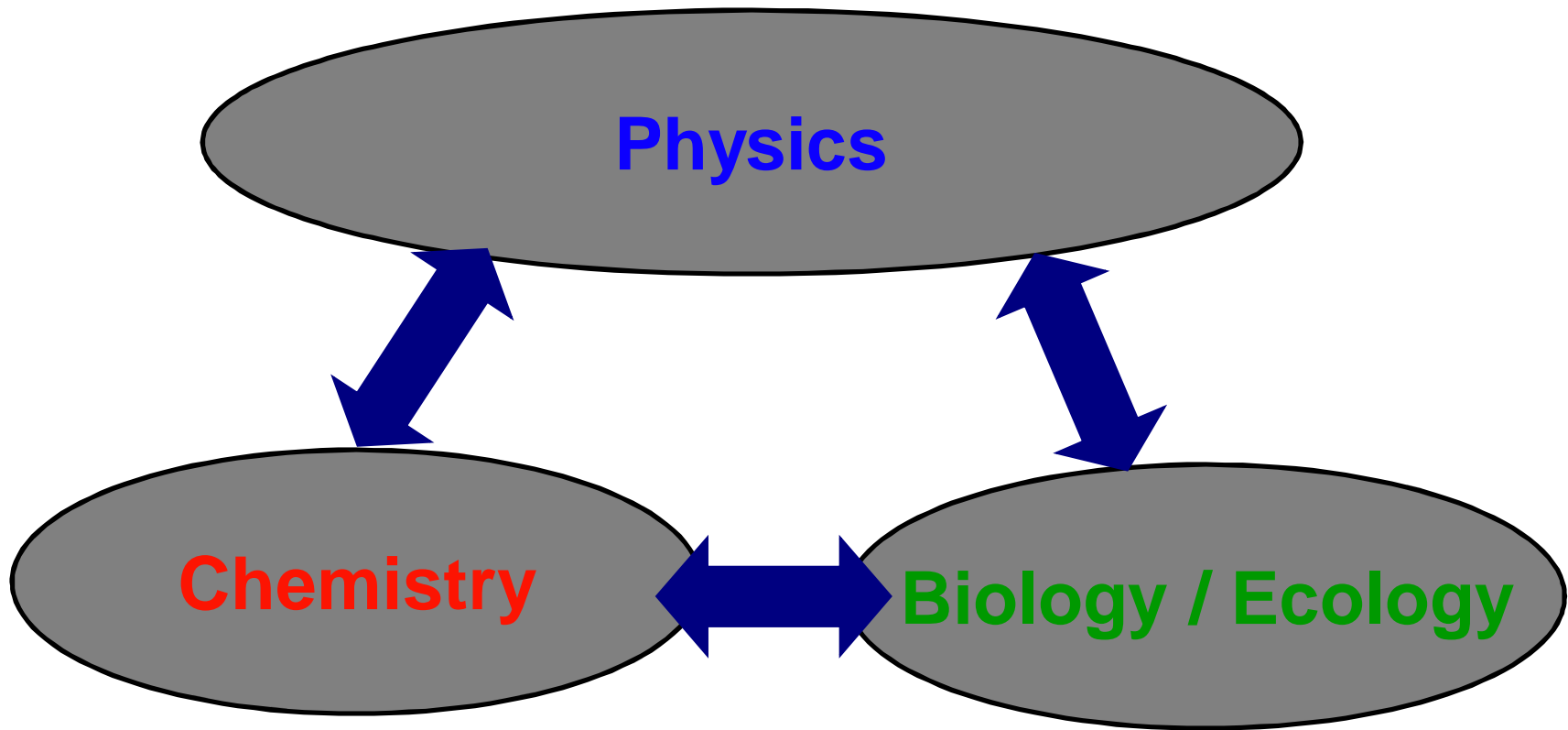


Source: Prof.dr.ir. Guus Berkhout

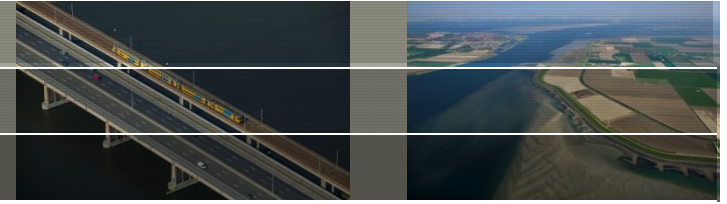
THE four “legs” of research interacting:



Environmental impact; Building with Nature:



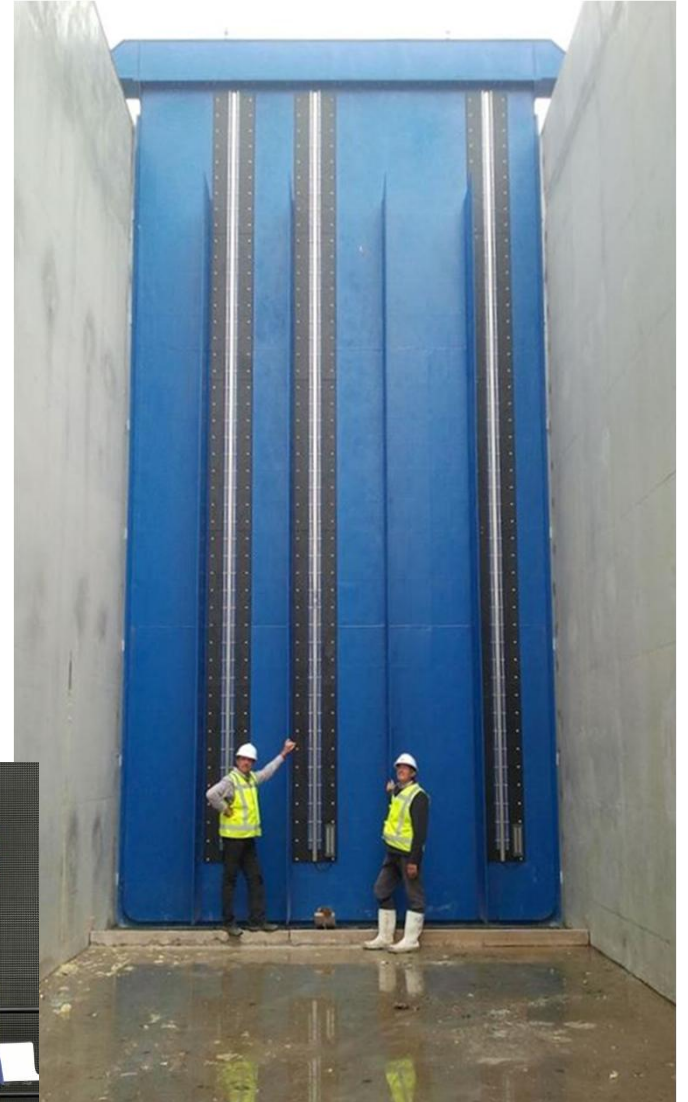
Building with Nature:




EcoShape
building with nature

Deltares

Grand opening Delta Flume – tsunami for TopSector

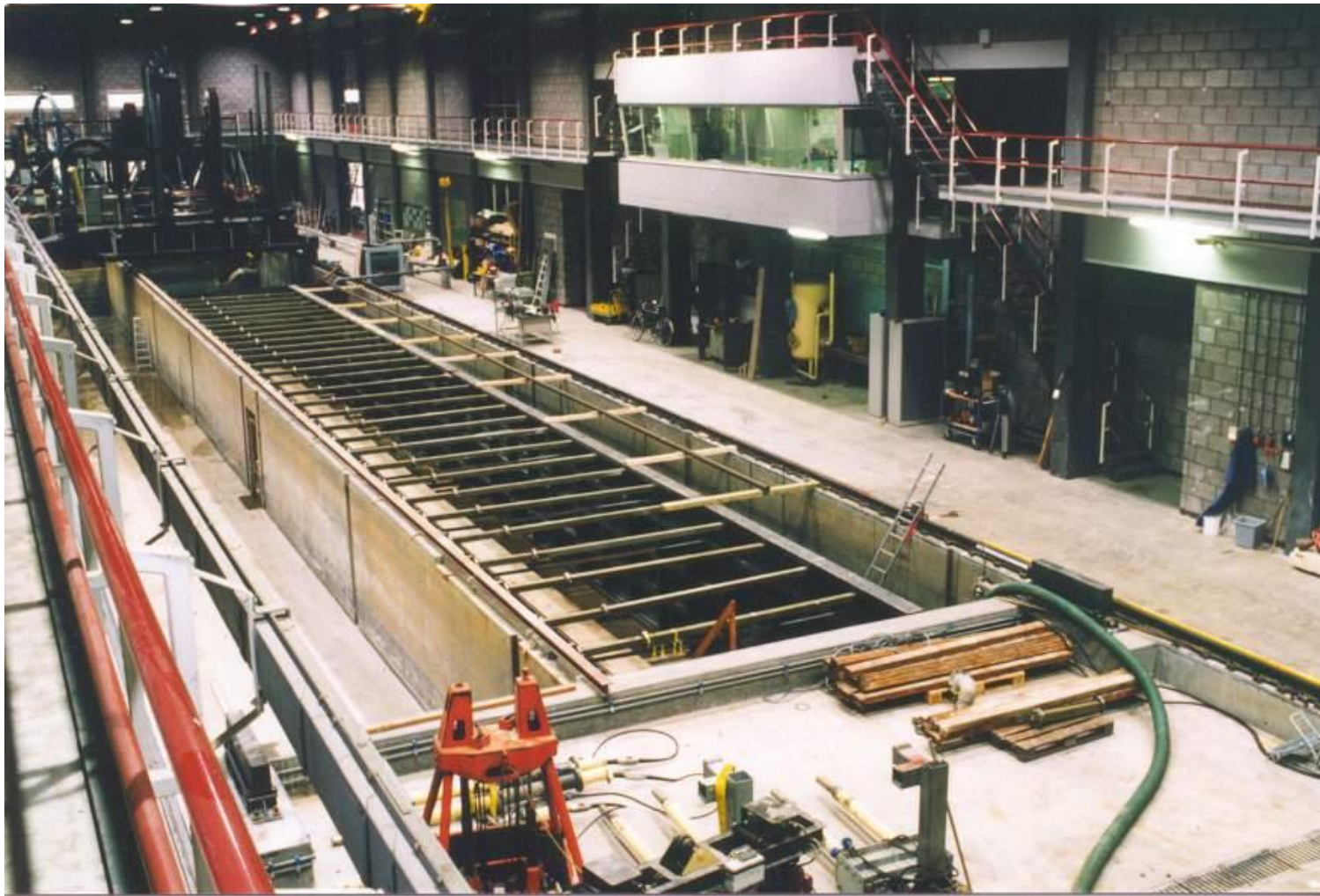


300m x 5m x 10m
Hs = 2.2 m
Hmax = 4.5 m
Full ARC
Tidal Motion



Deltares

Dredging and Slurry Technology at Deltares



Deltares